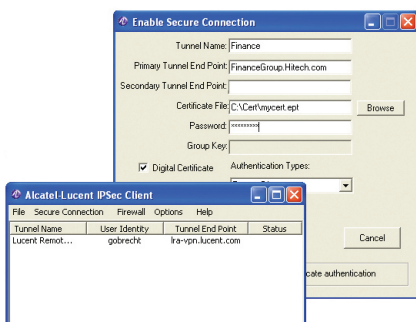


Alcatel-Lucent IPsec Client

REMOTE ACCESS VPN SERVICES

The Alcatel-Lucent IPsec Client enables you to provide high-value remote access VPN services for telecommuters and mobile workers with PCs running Microsoft Windows operating systems. The Alcatel-Lucent IPsec Client was expressly built to ease deployment of remote access solutions by combining standards-based IP Security (IPsec) features, a built-in “personal firewall,” and, in conjunction with the Alcatel-Lucent Security Management Server, a centralized management to deliver a totally secure, scalable solution that streamlines installation, administration, configuration, upgrades, and use of the client throughout your mobile workforce.



Features

- Integral IP security: stateful firewall, strong packet encryption, robust authentication options
- Built-in “personal firewall” provides complete protection, even for always on cable and DSL connections
- Completely integrated, centralized management options available with the Alcatel-Lucent Security Management Server software and VPN Firewall Brick appliances
- Automatic security policy profile download at user log-in
- Detailed client status logs for accounting and troubleshooting
- Intuitive graphical user interface (GUI)
- Online help with comprehensive contents, index, and search capabilities
- End-user policy enforcement capability

- *Connection versatility* – supports any connection mode: dial-up modem, WAN router, DSL, cable, wireless link, 3G data card
- *Streamlined VPN administration* – centrally provisioned and managed for large-scale remote access services
- *Cost-saving flexibility* – Interoperable with Alcatel-Lucent VPN Firewall Brick security appliances, spanning SOHO to data center to central office requirements; ensures the right solution at the right price/ performance point
- *Carrier-grade availability* – automatic failover to secondary tunnel endpoint
- *Ease of use* – user-friendly GUI; near-effortless session initiation; online help

Applications

- Managed VPN services
- Remote private intranet access
- Private extranet access
- Public Internet access

Benefits

- *Quick and simple implementation* – complete, fully integrated solution; point-and-click installation; “near zero” configuration

Technical specifications

Platforms

- Windows XP SP2, Windows Vista x86 and Vista x64

Interoperability

- Alcatel-Lucent VPN Firewall Brick Security Appliances
- Alcatel-Lucent Security Management Server and Compute Server management platforms

Connection technologies

- Dial-up modem, DSL/ADSL, cable modem, wireless link, 3G Network, or various NIC and PCMCIA cards

Supported standards

- IPSec Encapsulating Security Payload (ESP) with DES, Triple-DES, and AES-128, AES-192, and AES-256
- IPSec Authentication Header (AH) with HMAC-MD5 and HMAC SHA-1 authentication
- Diffie-Hellman Groups 1, 2, 5, 14, and 15
- IPComp (LZS compression)
- X.509
- PKCS #12

User authentication

- Local passwords, RADIUS, SecurID, X.509 digital certificates with PKI PKCS #12 and PFX standard
- CAPI Store Integration
- Automatic LDAP certificate retrieval

RADIUS parameter download

- User-specific parameters configurable in administrator's RADIUS database applicable to IPSec Client user tunnels:
 - Local Presence address
 - Primary/secondary DNS
 - Primary/secondary WINS
 - Login timeout
 - Idle timeout
 - User group

Notifications

- Delivers administrator-specified message when tunnel established; must be acknowledged to continue

Software upgrade management

- Notifies when Client upgrade is available; single click upgrades the IPSec Client software with newer version

Logging

- Maintains local logs of connection attempts, including detailed IKE and IPSec negotiation

Tray icon

- Indicates tunnel activity, firewall setting in effect and provides continuous traffic statistics

DNS/WINS

- Automatically configures local primary and secondary DNS (Domain Name Server) and WINS (Windows Information Name Server) addresses

Custom branding

- Provides the ability to customize the IPSec Client graphical user interface (GUI) with customer-specific images and text, both in installation process and runtime software

Personal firewall

- Includes a stateful personal firewall
- Configurable for active and inactive tunnels; active tunnel configuration controlled by administrator; inactive tunnel configuration controlled by end-user
- Configurations:
 - Block all
 - Pass all
 - Pass only client-initiated (outbound sessions only)

UDP encapsulation of IPSec

- Allows a telecommuter using an Internet service provider that assigns a private address and performs NAT on outbound connections, to transparently use the IPSec client
- For non-IPSec aware PAT devices, tunnels IPSec inside User Datagram Protocol (UDP) packets; repackages the IPSec packet into a new UDP packet destined to the Tunnel End Point and UDP port specified by the tunnel administrator

Local presence

- Assigns a local network address to the Alcatel-Lucent IPSec Client user's PC
- Allows complex connections, such as X-Windows, to be directed back from other hosts to the client host, using established network routing paths
- Assigns local addresses using a local pool managed by the Alcatel-Lucent Security Management Server, or one-at-a-time using the RADIUS parameter download feature

Split tunneling

- Permits simultaneous clear-text and encrypted traffic; system administrator configures all personal firewall settings and endpoint IP network behind tunnel; can disallow clear-text traffic entirely

High availability

- Can be configured and saved with a number of tunnels
- Each tunnel can have its own backup tunnel endpoint, in case the primary is not reachable

Scriptable command line interface

- Allows full external script control of Client tunnel set-up and tear-down

Ordering information

The Alcatel-Lucent IPSec Client is included with the purchase of the Alcatel-Lucent Security Management Server

Refer to the Alcatel-Lucent Security Management Server v9.4 for ordering details

Additional management upgrade licenses are available:

COMCODES

- **301033478:** Management upgrade license to manage 100 additional simultaneous IPSec-based Remote Access VPN Client
- **301033486:** Management upgrade license to manage 500 additional simultaneous IPSec-based Remote Access VPN Client
- **301033494:** Management upgrade license to manage 1000 additional simultaneous IPSec-based Remote Access VPN Client
- **301033502:** Management upgrade license to manage 10,000 additional simultaneous IPSec-based Remote Access VPN Client

ActiveX is a trademark of Microsoft Corporation. Java is a trademark of Sun Microsystems, Inc. NEBS is a trademark of Telcordia Technologies. Pentium® is a registered trademark of Intel Corporation. Solaris is a trademark of Sun Microsystems, Inc. Sun® is a registered trademark of Sun Microsystems, Inc. UL® is a registered trademark of Underwriter's Laboratories. Windows® is a registered trademark of Microsoft.